

2023 Summer Special Exhibition  
Sacred Places in Ishikawa Prayer and Buddhism in Medieval Japan



### Summary

Reijō are sacred locations open to pilgrimage by many followers. Since the late Heian period (794-1185), sites on a national scale such as Kōyasan and Kumano Sanzan have been established, and in Ishikawa, Hakusan and Sekidōsan are thought to have been considered reijō from around the 12th century. Moreover, zaichi reijō, which were smaller and closely connected to local communities, also began to emerge. It is thought that while there were originally many zaichi reijō throughout the prefecture, some disappeared due to warfare and changes in social structure, while others have continued to exist as temples and shrines until now.

This exhibition introduces the formation of reijō in Ishikawa and their development in the Middle Ages, with a focus on those remaining today. Many of the objects on display have been carefully preserved and handed down to temples and shrines throughout the prefecture. We hope that visitors will be able to feel the prayers offered to these sacred sites.

### Exhibition Structure and Main Exhibits

#### 1. The Opening of Seichi

Seichi are locations such as mountains, forests, waterfalls and megaliths considered to be sacred. From the Nara period (710-794), they were first entered by mountain ascetics whose practices led to new visitors and an awareness of their sacred status. This chapter introduces what the ascetics left behind.



重要文化財 木造泰澄及二行者坐像  
明応2年(1493) 国(文化庁保管)蔵  
福井県立歴史博物館画像提供



羽咋市指定文化財 銅製三鈷鏡  
(福水ヤシキダ遺跡出土)  
奈良～平安時代(8～9世紀) 個人蔵

## 2. Spread of the Pure Land Faith

Pure Land Buddhism was an important factor in the development of seichi into reijō. From the end of the 10th century onwards, as the faith spread, people sought a Pure Land connected to this world that they would eventually find in these sacred sites. This chapter exhibits materials related to ancient and medieval Pure Land beliefs in Ishikawa Prefecture.



木造 阿弥陀如来および両脇侍像  
平安（12世紀） 珠洲市 曹源寺蔵



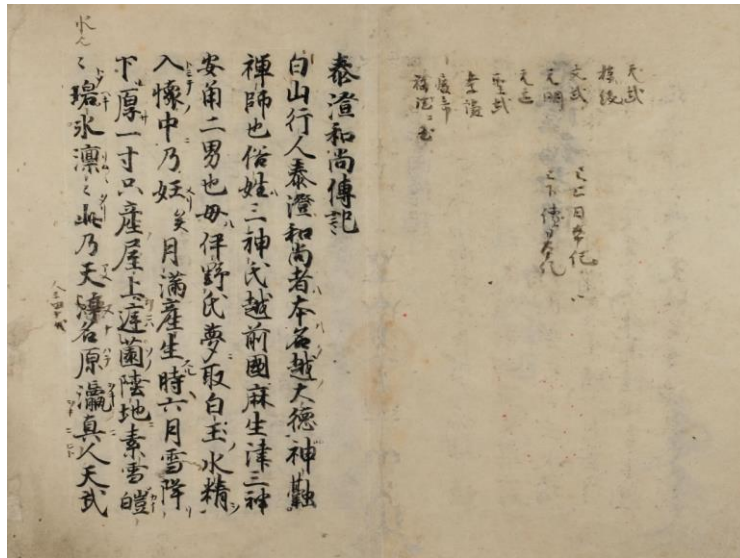
重要文化財 刺繍 阿弥陀三尊像  
平安～鎌倉時代（12～13世紀） 七尾市 西念寺蔵  
石川県七尾美術館画像提供  
first half period exhibition 7/22 ~ 8/9



木製笠塔婆（千田北遺跡出土）  
平安～鎌倉時代（12～13世紀） 金沢市蔵  
金沢市埋蔵文化財センター画像提供

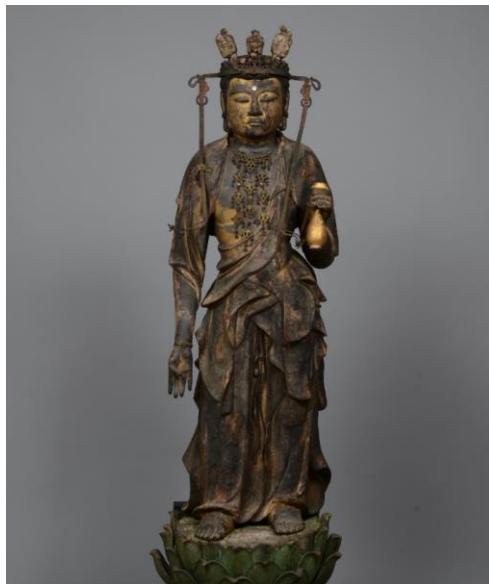
### 3. From Seichi to Reijō

Hakusan has been renowned as sacred since ancient times, while mountain ascetic practices were conducted at Sekidōsan in the early Heian period (9th-10th century). In the Middle Ages, these two seichi developed into reijō where visitors from all over the country gathered. This chapter explores the medieval sacred sites of Hakusan and Sekidōsan through historical documents, paintings and Buddhist statues.

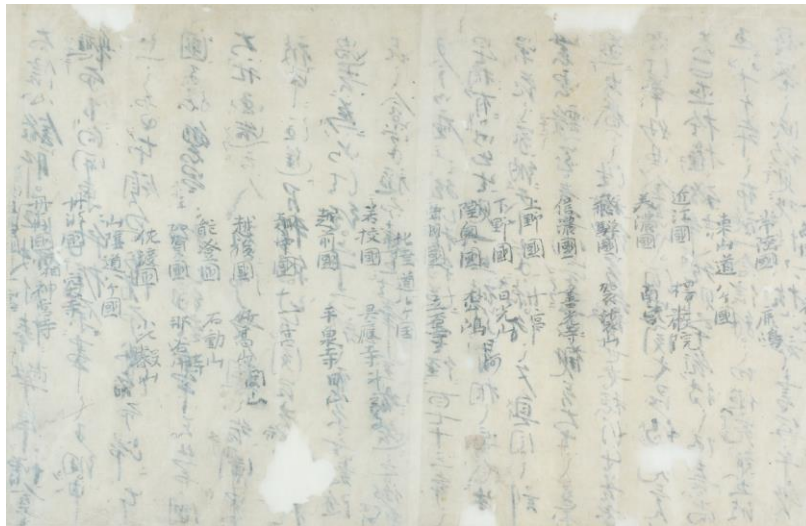


国宝 泰澄和尚伝 正中2年（1325）

神奈川県 稱名寺蔵 神奈川県立金沢文庫画像提供  
second half period exhibition 8/11 ~ 9/3



中能登町指定文化財 木造 十一面観音立像  
南北朝時代（14世紀） 中能登町 石動山天平寺蔵



国宝 六十六部奉納札所交名 書写年未詳  
神奈川県 稱名寺蔵 神奈川県立金沢文庫画像提供  
first half period exhibition 7/22 ~ 8/9

#### 4. Zaichi Reijō in Noto

Some reijō, such as Hakusan and Sekidōsan, were well-known throughout the country, while others were of a smaller scale. As suggested by the existence of the Noto-kuni Sanjūsankan-no Reijō, it is thought that there were many zaichi reijō throughout the Noto region in the medieval period. This chapter introduces such local sacred sites through Buddhist statues, illustrations, donation documents and munefudas, along with prayers offered there.



石川県指定文化財 木造 千手観音菩薩立像  
平安時代 (10世紀末~11世紀前半) 穴水町 明泉寺蔵



穴水町指定文化財 木造 伝阿弥陀如来立像  
平安時代（11～12世紀） 穴水町 明泉寺蔵



木造 地蔵菩薩立像  
平安時代（12世紀） 輪島市 岩倉寺

Exhibition period: July 22 (Sat) - September 3 (Sun), 2023

Hours: 9:00-17:00 (entry to exhibition rooms until 16:30)

Holidays: August 10 (Thursday)

Venue: Special Exhibition Room, Temporary Exhibition Room

General admission: ¥1,000 (¥800)

University and vocational school students: ¥800 (¥640)

- High school students and below: Free
- Group rates for visitors aged 65 and over shown in brackets.
- Free of charge for those who present a disability certificate or Mirairo ID and one accompanying person.
- The permanent collection can also be viewed in conjunction with the exhibition.
- A separate admission fee is required for the Kaga-Honda Museum.
- E-tickets are also available.

#### E-ticket information

Sales period: Monday July 3 – Sunday September 3 (until 15:30)

General admission: ¥1,000

University/vocational school students: ¥800

(Please note)

E-tickets are not available to those aged 65 and over, and others eligible for other discount rates. Please purchase tickets at the office on the day of your visit.

Tickets are not date and time-specific, so it is not possible to guarantee an entry slot.

Organizer: Ishikawa Prefectural Museum of History

Special collaborator: Hokkoku Shimbun